

eW Profile Powercore Switched Junction Box

Installation Instructions

Instructions d'installation
Installationsanweisungen
Instrucciones de instalación
Istruzioni per l'installazione
Installatie-instructies
インストール手順
安装指示

⚠ Must be installed by a qualified electrician in accordance with all national and local electrical and construction codes and regulations.

Doit être installé par un électricien qualifié conformément aux codes et réglementations électriques nationaux et locaux du bâtiment.

Muss von einem geprüften Elektriker in Übereinstimmung mit allen nationalen und örtlichen elektrischen Codes und Regelungen installiert werden.

La instalación debe realizarla un electricista calificado siguiendo todos los códigos y normativas eléctricas y de construcción, tanto nacionales como locales.

Devono essere installati da un elettricista qualificato in conformità con le norme locali e nazionali vigenti in materia di costruzioni edilizie e installazione di impianti elettrici.

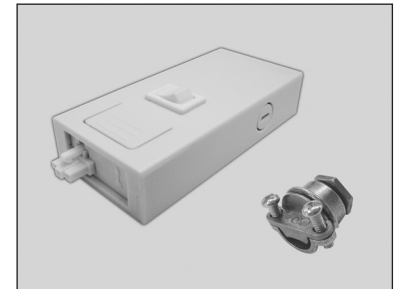
Moet door een gekwalificeerd elektricien overeenkomstig alle nationale en lokale elektrische verordeningen worden geïnstalleerd.

国または地域の建築コードおよび規制にすべて従い、資格のある電気技師が設置してください。

必須根据所有国家和地方的电气和施工准则及规范，由符合资格的电工进行安装。

 www.colorkinetics.com/support

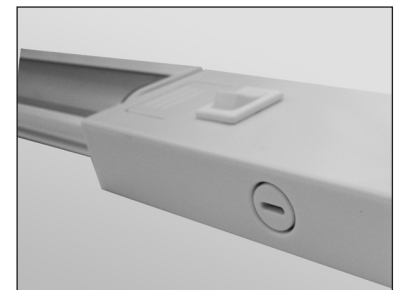
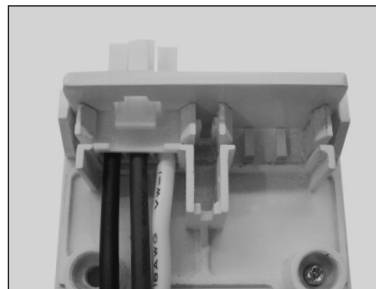
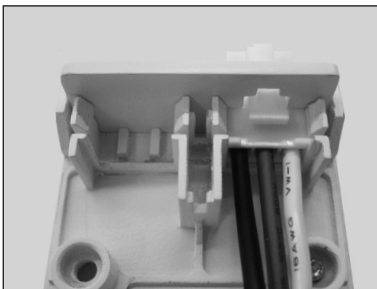
1 Confirm all components received.



2 Open the Switched Junction Box by removing the two Phillips-head screws from the back panel.



3 When installed, the Switched Junction Box should align flush with the front edge of a run of fixtures. The 3-pin connector comes positioned for installing on the right end of a run. For installations on the left end of a run, you must move the connector.

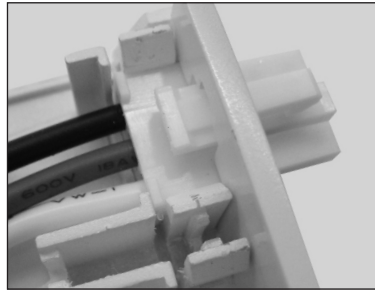
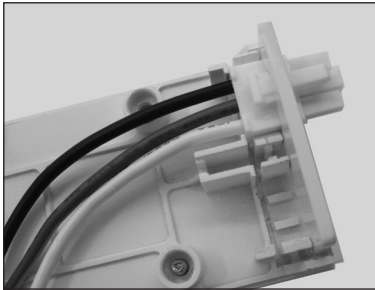
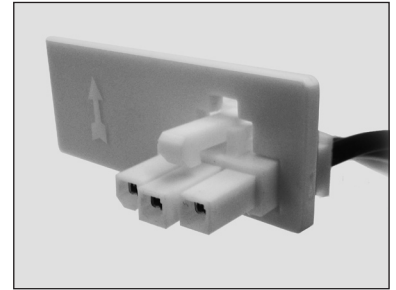


To move the connector:

Remove the end plate from its slot, and the 3-pin connector from the end plate.

Move the connector to the other slot. (Make sure that the arrow on the end plate is oriented up).

Insert the connector in the end plate, and the end plate into the slot, ensuring that the connector clicks securely in place.

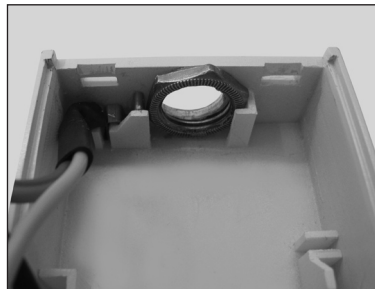
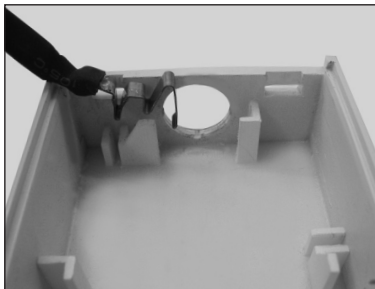
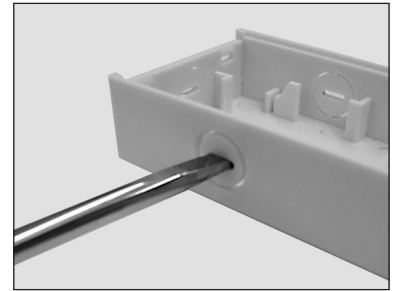


4

The Switched Junction Box has three knockouts for inserting the power line — one on the end of the housing, and one on either side. Using a flat-blade screwdriver, remove the knockout that you want to use.

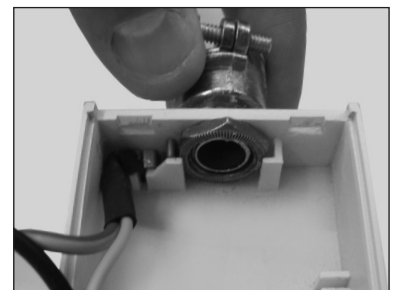
5

Remove the hex nut from the strain relief connector, and insert it into the slot behind the selected knockout opening. Insert the ground connector strip into the tab to the left of the knockout opening, so that the strip touches the hex nut.



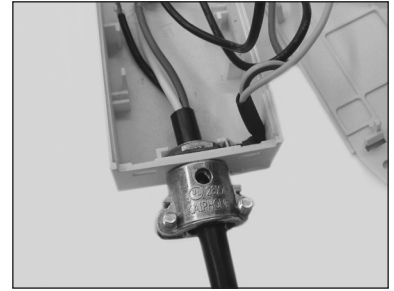
6

Attach the strain relief connector to the hex nut, and tighten. (The Phillips-head screws should be accessible when the Switched Junction Box is installed. You may need to reposition the hex nut in its slot to properly orient the strain relief connector screws.)



7

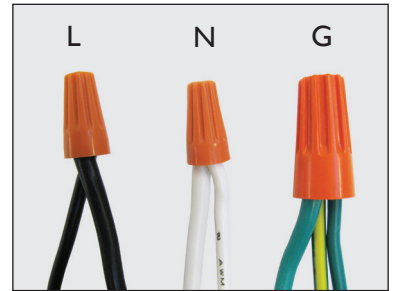
Insert the power line through the strain relief connector, leaving enough wire inside the box to make connections. Tighten the Phillips-head screws on the strain relief connector.



8

Trim 3/8 in (10 mm) of insulation from the wires, and attach wire nuts:

Line (L)	Connector with black wire
Neutral (N)	Connector with white wire
Ground (G)	Connector with yellow/green wire



9

Package wires in the Switched Junction Box housing, making sure not to pinch them, and replace the back panel using the two Phillips-head screws.



10

Connect the Switched Junction Box to the eW Profile Powercore fixture at the end of the run. Use the two mounting holes to secure the Switched Junction Box to the mounting substrate with screws.





Philips Color Kinetics
3 Burlington Woods Drive
Burlington, Massachusetts 01803 USA
Tel 888.385.5742
Tel 617.423.9999
Fax 617.423.9998
www.colorkinetics.com

Copyright © 2009 Philips Solid-State Lighting Solutions, Inc. All rights reserved.
Chromacore, Chromasic, CK, the CK logo, Color Kinetics, the Color Kinetics logo, ColorBlast, ColorBlaze, ColorBurst, ColorGraze, ColorPlay, ColorReach, DIMand, EssentialWhite, eV, iColor, iColor Cove, IntelliWhite, iW, iPlayer, Light Without Limits, Optibin, and Powercore are either registered trademarks or trademarks of Philips Solid-State Lighting Solutions, Inc. in the United States and / or other countries. All other brand or product names are trademarks or registered trademarks of their respective owners. Specifications subject to change without notice.